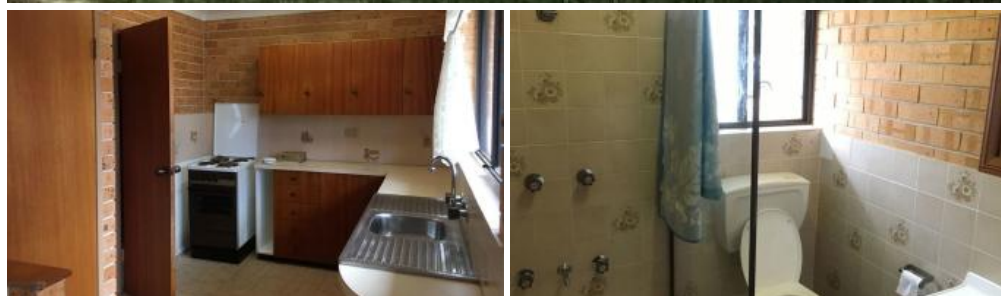


Leased



2/192 Chapel St, Armidale



## Affordable – Water and Yard Care included

These are great low maintenance units. Warm with double brick in a small block of four. Very close to East Armidale Store and Newling school.

Two very generous sized bedrooms both with built in cupboards. Good Sized lounge area and kitchen with a built in dining bench and chairs with brand new timber look flooring being laid throughout living/ hallway and kitchen . Carpet in the bedrooms. New curtains throughout. Carport cover at the door.

### LAWN AND GARDEN CARE INCLUDED

Water included in the rent.

*The above information provided has been furnished to us by the vendor/s. We have not verified whether or not that information is accurate and do not have any belief in one way or the other in its accuracy. We do not accept any responsibility to any person for its accuracy and do no more than pass it on. All interested parties should make and rely upon their own inquiries in order to determine whether or not this information is in fact accurate.*

2 1 1

<b>Price</b>	\$260 INC Water & Yard Maint.
<b>Property Type</b>	Rental
<b>Property ID</b>	188

### Agent Details

Armidale Rentals Leasing  
Consultant - 026 772 6626

### Office Details

Armidale Rentals  
SHOP 7 108 Dangar St Armidale,  
NSW, 2350 Australia  
02 6772 6626

